

A close-up, artistic photograph of a hand holding a camera lens. The lens is the central focus, and its glass surface reflects a bright, circular image of a landscape with a blue sky, white clouds, and green fields. The background is a soft, out-of-focus blue and grey, suggesting a sky or a studio backdrop. The overall mood is professional and forward-looking.

WITHSECURE™ STRATEGY

Focal Future

Build and sustain digital trust

We are here to build and sustain digital trust so that everyone relying on us can **thrive digitally with confidence and never experience a serious loss from a cyber attack.**

Navigating the perfect storm

Industrialization of cybercrime accelerating

The industrialization of cybercrime is propelled by reduced costs and increased profits, particularly through methods such as ransomware and supply chain attacks. This trend is particularly pronounced in cloud-powered and interconnected mid-sized businesses.

Rapid expansion of attack surface

The swift embrace of cloud computing, Internet of Things, automation, AI, remote work, and the widespread utilization of digitally-driven opportunities has broadened the attack surface. Effectively managing both the external attack surface and internal security posture has become both challenging and essential.

When interconnected business world goes rogue

Modern businesses increasingly rely on assets they neither own nor control. This interconnectivity has woven a complex web of vulnerabilities, and the consequences of a single security breach extend far beyond the immediate incident.

Catching the perfect wave



Demand for minimum effective security

The industry is dispelling the myth of "more is more" in cybersecurity. Security professionals are now guided by a new 'north star'—pursuing the right, minimum effective security to safeguard business outcomes.

Gravitation to “The European Way”

Europe's regulatory frameworks are influencing global digital governance in crucial areas such as data privacy, AI, cybersecurity, and sustainability. Despite the absence of global tech giants, Europe's impact is substantial, advocating for a more user-centric, human, and democratic regulatory approach.

Mid-size businesses increasing their power and placing trust in partnering

Throughout the world, mid-sized businesses serve as the engines of economic growth, yet they often feel underserved, under-resourced, and overwhelmed in the realm of IT security.

**Become a flagship of
European cyber security that
cyber adversaries hate and
our partners love.**

3X3

Elements Cloud™ for security outcomes

We focus on making Elements Cloud™ game-changing SaaS platform connecting technologies and co-security services into one experience and one modular set of capabilities bridging tech-outcome gaps.

Mid-market and channel partner success first!

We focus on serving the under-resourced, under-served and overwhelmed mid-market customers and co-securing them together with the IT security service providers they trust and prefer to work with.

Winning with “the European way”

We focus on winning on Europe’s key markets and developing our global presence with European values of trusted partnerships, tech integrity, sustainability and regulative compliancy by design.

Excellence in Co-Security

Mastering a collaborative way of succeeding in good partnership

Excellence in Artificial Intelligence

Supercharging technologies and users with an extensive use of AI

Excellence in Human expertise

Leading with the human expertise to bridge the tech-outcome gaps

Vision of Elements Cloud

One Experience. Fully modular. Made for Co-Security

Software capabilities for **PROTECTION, DETECTION & RESPONSE**

CDR
Cloud
detection &
response

EDR
End point
detection &
response

EPP
End point
protection

CP
Collaboration
protection

Take market and
GROW

Software capabilities for **EXPOSURE MANAGEMENT**

IEM
Intelligent Exposure
management

ASM
Attack
surface

ID
Identity
risk

VM
Vulnerability
management

CSPM
Cloud security
posture

SSPM
SaaS security
posture

Make market and
ATTACK

Human expertise capabilities for **CO-SECURITY SERVICES**

MDR
Standard

MDR+
Premium

CM
Co-
Monitoring

IRR
Incident
readiness &
response

CDRS
Cloud D&R
Service

ASMS
Attack surface
Management

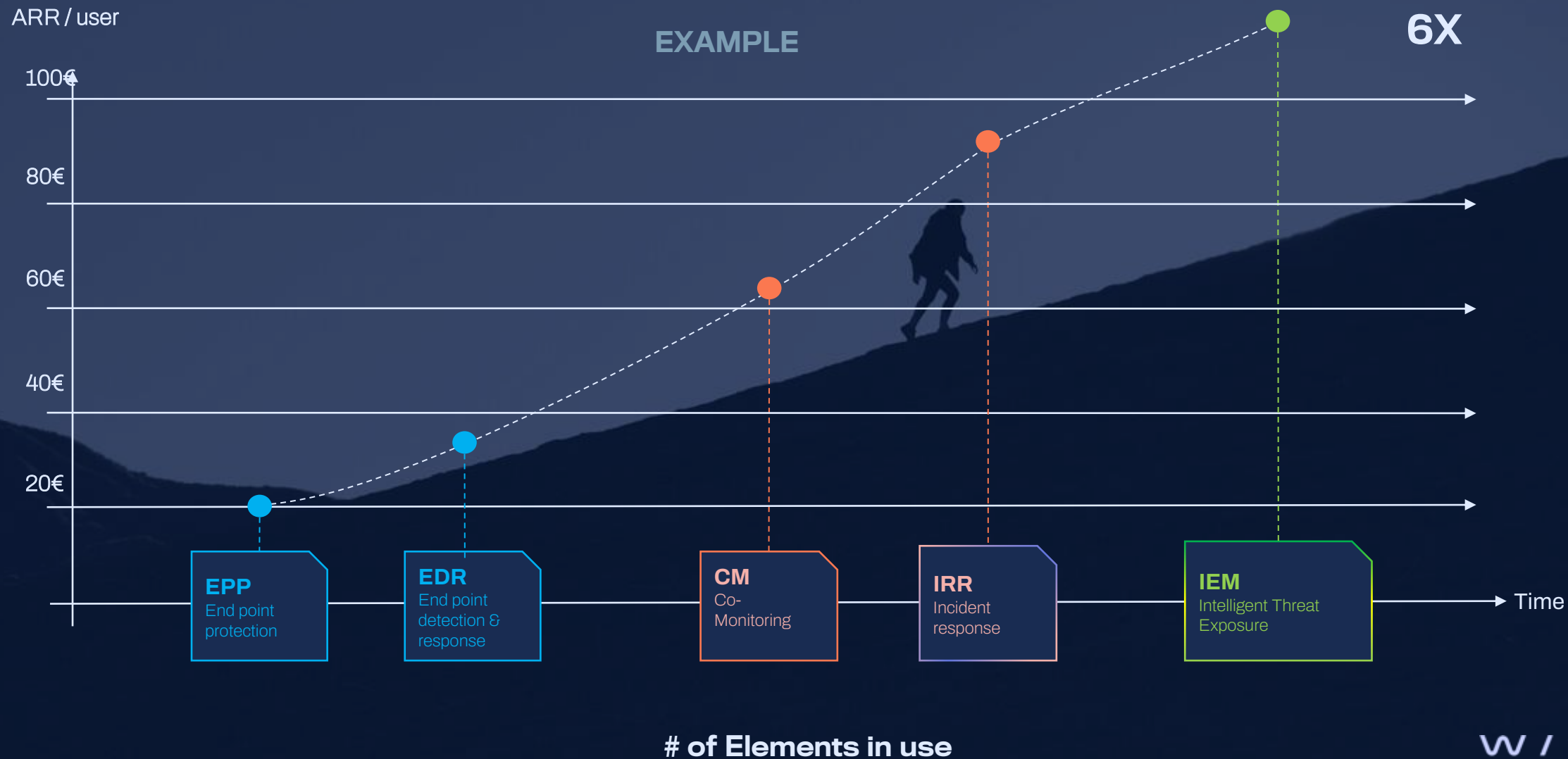
E^
Elevate to
W/Secure

CSS
Customer
Success
Services

XE^
Extended
Elevate Service

Differentiate and
WIN

Unlocking the full ARR potential W/Elements



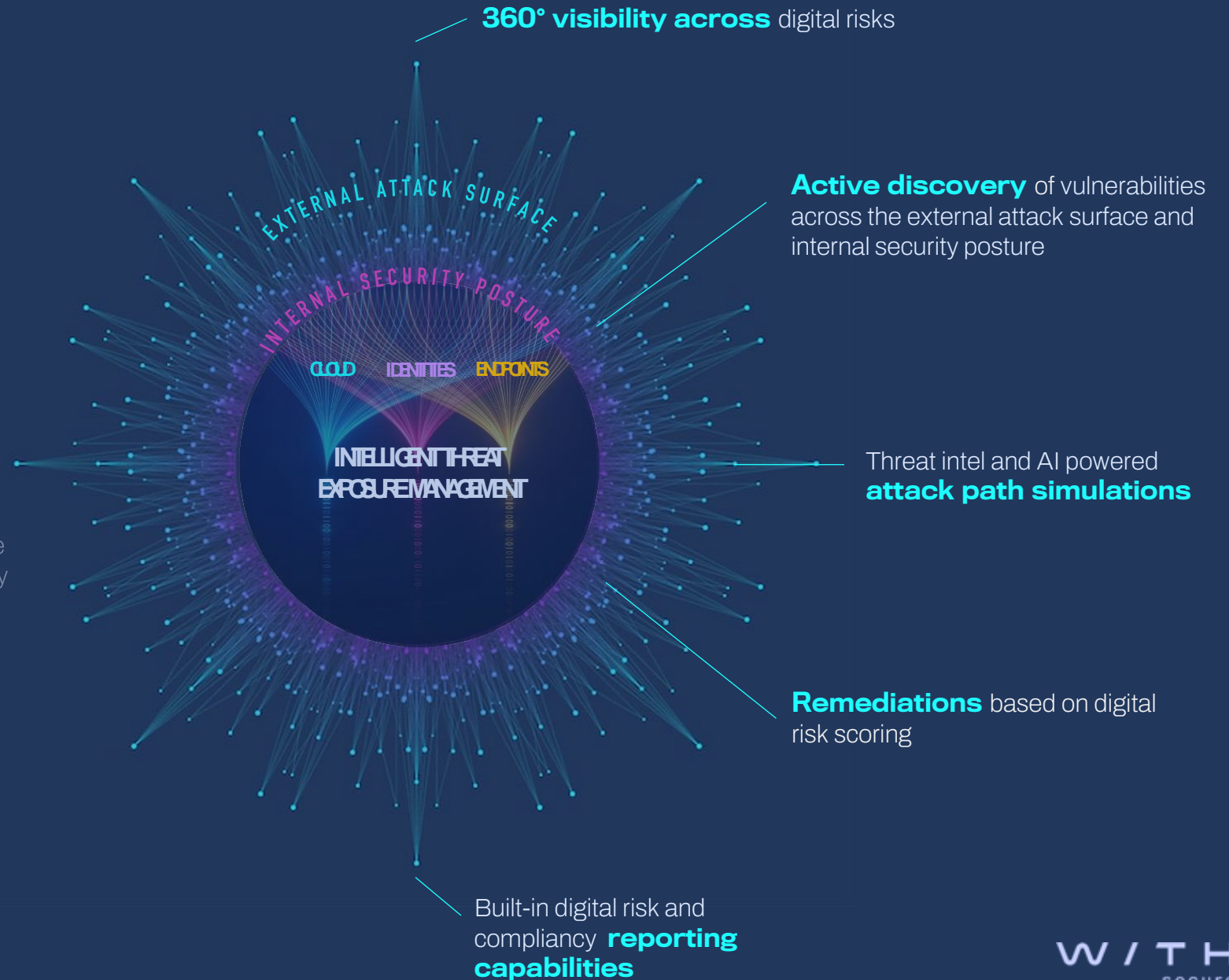
Intelligent Threat Exposure

Effective. Effortless. Made for mid-market.

Reducing digital risk and preventing breaches (not just stopping) is the most efficient and effective way to reach the security outcomes. It requires a new approach to proactively and constantly understand and manage the external attack surface and internal security posture.

“By 2026, organizations prioritizing their security investments based on a continuous threat exposure management will be three times less likely to suffer from a breach.”

Gartner, Implement a Continuous Threat Exposure Management (CTEM) Program, July 2022



Co-Securing midmarket with the partners they trust



Humbly the best choice to partner W/

Always just seconds away

When you face resource shortages, lack human expertise, or need advanced technology capabilities to ensure the safety and satisfaction of your customers, we are there with you at any given moment.

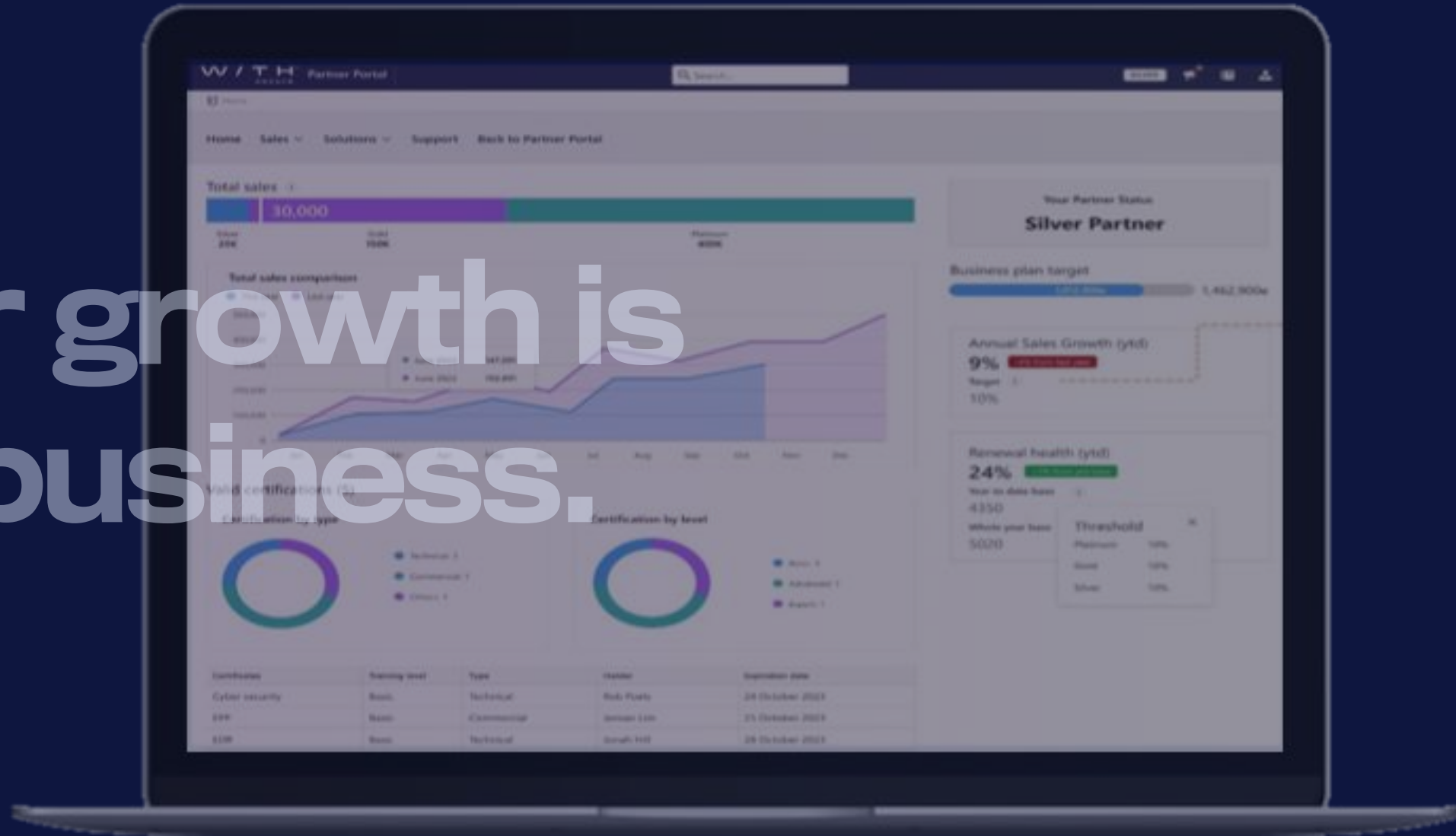
Accelerated time to market and healthy profits

We collaborate with you to co-innovate, co-create, and co-deliver new offerings, ensuring the most profitable and accelerated outcomes by bringing the needed people, processes and products for you.

You define success. We adapt.

We stand apart from tech giants, as we don't smooth out your edges and unique characteristics; instead, we work alongside you to amplify and adapt to them.

Your growth is our business.



Markets

Growth markets

Challenger markets

Finland

Benelux

DACH

Scandinavia (SE,NO,DK)

France

US

UK

Region Global

Japan

Consulting running solo now

...to become the leading global provider of offensive security solutions, advising customers on the most complex cyber challenges.

...with a dedicated sales and marketing organization to **improve profitability and restoring growth** through our valuable enterprise client base and pursuing new growth in US, UK, Nordics and Singapore

...to deliver innovative, reliable, and cost-effective solutions that exceed our customers' expectations and help them stay ahead of the ever-evolving threat landscape.

CPSF keeps running solo...



...to be **#1 SaaS content protection** solution with a strong, focused market presence in North America and South-East Asia markets

...to evaluate the **strategic expansion options**:

- A) Vertical expansion to other security functions inside the Salesforce ecosystem
- B) Horizontal expansion to other enterprise SaaS platforms

Data loss
prevention



salesforce

Data security
posture mgmt



salesforce

Content
protection



salesforce



servicenow



workday.

Focal future strategy will make us a ...

Golden standard for mid-market

Elements Cloud is setting new standards for "minimum effective cyber security" and intelligent exposure management. It is a #1 SaaS platform that connects co-security services and cyber security technologies into a fully modular, evolving set of capabilities for endpoint protection, threat detection & response and intelligent exposure management.

Leader in co-security

Our name and co-security mindset is a promise of "good partnership" - the best choice for channel partners serving mid-market businesses. Our people, products and processes are known for delivering proven outcomes and being fanatic about customer and partner success.

Flagship of European cyber security

We are a fast-growing, profitable and dominant player on key markets in Europe while extending our global impact. Embracing "The European Way" of cyber security our commitment to tech integrity, strategic partnerships, trust and customer-centric regulatory approach has solidified our status as a true alternative to tech-giants outside Europe.

W / T H[®]
secure