

Get ready to SOAR on WithSecure Elements API

What's the story?

The new WithSecure Elements API helps our tech play well with everyone else's - specifically Security Orchestration and Automated Response (SOAR) systems. We already offer connectivity for SIEM via Elements Connector, but SOAR is a more demanding tech, as it requires a two-way API.

Now you can integrate WithSecure Elements into your SOAR with our API - just go to connect.withsecure.com and get started.

What does that mean?



Automate the querying of status and detailed events of EDR incidents from your SOAR



Extensive information about the device for better context



Response capabilities to perform actions directly from your SOAR



Update EDR incident status to automatically close false positives - and keep incident status in sync with Elements Security Center



Add comments to EDR incidents to automatically update your customer

What does it mean for WithSecure partners?



If you're a Managed Security Service Provider, you can automate the management of WithSecure Elements from your SOC right now



Add comments and manage status to ensure your customer has up-to-date information visible in Elements Security Center



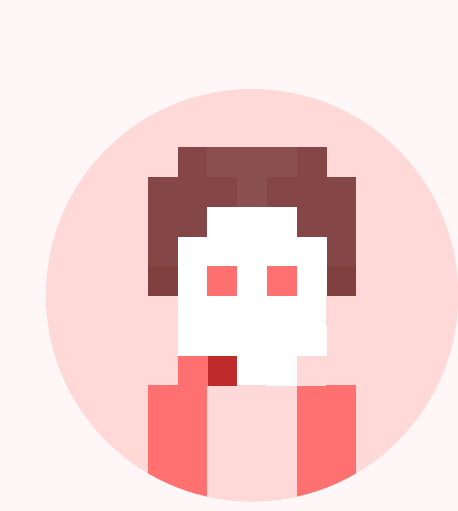
Use tools from Elements with other data sources to better protect your customers



Get the full picture by enriching the data with other information about the user or the device

What does using it look like?

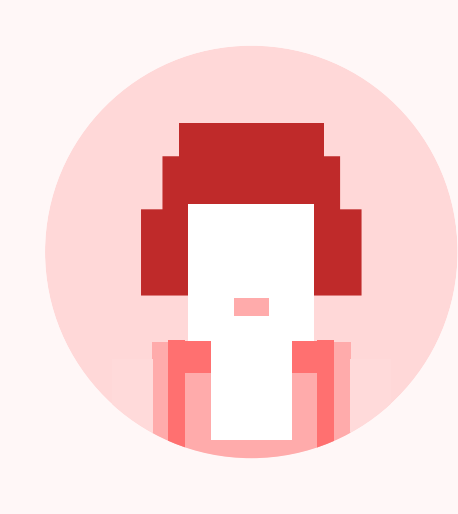
Sekoia and Shuffle are two partners that have already implemented our API:



"The brand new APIs provided by WithSecure are state-of-the-art and allowed Sekoia.io to easily develop an Elements connector within our SOC platform.

This seamless integration provides our customers with the capabilities to leverage all the potential of Elements. Specifically: they can now orchestrate the response actions that rely on Sekoia.io's SOAR features."

Georges Bossert, CTO at Sekoia.io



"Seamlessly integrating Shuffle SOAR and WithSecure's Elements API is like unlocking the power of automated incident response management at your fingertips. This makes it easier to establish a holistic view of any security landscape which helps streamline response and protection."

Binu Panicker, Director of Business Development at Shuffle

What next?

Just go to connect.withsecure.com and open Elements API cookbook, Getting Started Guide and API Reference, and get exploring.

Any other goodies?

We're adding Collaboration Protection to our security events - check the [Elements API Changelog](#) for updates.